



寿力螺杆式真空泵

Sullair Rotary Screw Vacuum Pump



美国寿力

中山市顺力机电设备有限公司

TEL: 0760-88639018 FAX: 0760-88639013

[Http://www.zs88613178.com](http://www.zs88613178.com)

24 小时紧急服务专线: 139 2817 0110

地址: 中山市石岐区安山大街西 12 巷 6 号

 **SULLAIR** 美国寿力
Always air. Always there

寿力：聚焦螺杆技术

SULLAIR: FOCUS ON ROTARY SCREW TECHNOLOGY

寿力公司是世界顶尖的螺杆技术的领导者。自1965年始，寿力公司致力于对此领域的投入。凭借UTC公司的优势，进一步对螺杆技术进行推动和发展，在螺杆技术领域的研究和专用技术在世界无可匹敌。其真空产品广泛运用于：电子、铸铝、塑料、家具、封袋/印刷/出版、医院/制药、罐装、食品包装、航空等各行各业。

Sullair Corporation is one of the world's leading authorities on rotary screw compressor technology. Since it began manufacturing rotary screw compressors in 1965, Sullair has focused on this area of specialization. Sullair uses its extensive resources of UTC to further develop and advance rotary screw technology. The company continues to compile a body of research and expertise that is unparalleled in the field. Its vacuum pump systems are utilized in various industrial fields, such as electronics, aluminum casting, plastics, furniture, envelop / printing / publishing, hospital / medical supply, container manufacturing, food packaging, aviation, etc.



全线产品

品种齐全：寿力公司能够提供种类广泛的VS系列真空泵，范围2.2-87.4立方米/分钟。如此广泛的选择范围，您完全可以得到符合您的要求的真空泵。您可选择水冷型或风冷型，为您的特殊需要提供最具成本效益的冷却方式。

Complete product line

Sullair provides a wide variety of VS series vacuum pump, ranging from 2.2 to 87.4m³/minute. Our comprehensive products mean that you can always find a vacuum pump that suits your requirements. You may select water-cooled or air-cooled model to obtain a cost-effective cooling solution for your particular needs.

经时间证实的设计

寿力VS系列螺杆真空泵是业界最引人注目的真空泵，高效率，高性能，并具有螺杆机械装置的内在可靠性。

Time-proven design

Sullair VS series rotary screw vacuum pump is the most outstanding one in the industry, with high efficiency and performance as well as inherent reliability of rotary mechanical device.

先进技术

寿力最新VS系列真空泵可为用户提供顺畅稳定的操作以及可靠、低成本的性能，且结构坚固而且噪音低。VS系列真空泵用最优质部件制造，产品可靠性最高，保养费用极低。该系列较同规格范围内大部分真空泵性能更优越，选择范围更广。

Technologically advanced

Sullair's state-of-the-art VS vacuum pumps deliver smooth and stable operation and reliable cost-effective performance. They are compact and quiet.

Series VS vacuum pumps are built of the highest quality components, to assure the utmost reliability and minimum maintenance expense. Sullair offers more features and options than most vacuum pumps in this size range.

二年保固

VS系列真空泵使用单段螺杆真空主机，寿力公司为其提供二年保固。真空主机的轴承具坚固耐用的设计特性：位于排气端的止推轴承或向心止推球轴承及进气端的滚柱轴承或滚珠轴承，更适合重负载运转。

Two-year warranty

Series VS pumps use a single-stage, rotary screw vacuum pump, backed by Sullair's limited 2-year warranty, featuring in Sullair's rugged bearing design, tapered roller or angular contact ball bearings on the discharge end, cylindrical roller or ball bearings on the inlet for high load-carrying capability.

寿力真空系统：可靠和表现卓越的系统

SULLAIR VACUUM SYSTEMS: OUTSTANDING PERFORMANCE AND ROTARY SCREW DEPENDABILITY.

已经证实了的可靠性

在全球有超过15万台的寿力空压机及真空泵在运转。

Proven dependability

Over 150,000 more than 150,000 Sullair vacuum pumps and compressors in use around the world.

出众的运转效率

寿力真空泵系统的运转效率高：VS系列真空泵比其他类型的真空泵能量消耗降低20%-50%。不像液环式真空泵，其工作性能不受冷却剂的温度影响。另外，VS系列真空泵效率稳定，因为不像滑片式真空泵那样，它没有叶片磨损。

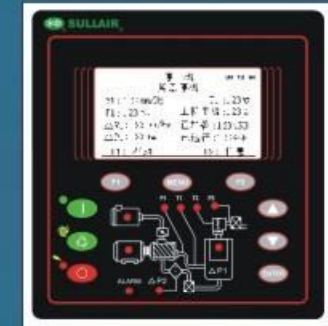
Superior operating efficiency

Sullair vacuum systems use proven rotary screw technology to produce vacuum at unrivalled efficiencies. Because they are air cooled and require no seal water, there are no water supply, treatment or disposal costs. As a result, these systems offer lower power costs and up to 20%-50% lower operating costs than other types. The system's capacity control maintains constant vacuum, which also contributes to lower operating costs. And there is no vane abrasion.



SULLSTAR控制器主要特点：

1. 32位ARM7 CPU核心，功能强大，业界领先。
2. 强大的帮助功能及数千条各种记录，更加贴近用户需求。
3. 可一屏显示120个汉字的超大液晶屏幕，各种信息一目了然。
4. 具有联机、变频器、MODBUS、CAN等多种通讯端口。
5. 手机菜单操作模式，操作便利。



SULLSTAR controller features:

1. 32-bit powerful ARM7 CPU, leading the industry.
2. Powerful helpdesk and thousands of log entries, meeting customer's requirements in a better way.
3. Large LCD capable of displaying 120 Chinese characters. Comprehensive information is readily available.
4. Multiple communication ports, such as Online, VSD, MODBUS, CAN, etc.
5. Mobile phone menu operation style, easy to use.

寿力真空泵润滑油 - SRF 1/4000

- 抗氧化稳定性高，运行寿命长
- 固有的高粘度指标—剪切稳定性
- 高温稳定性强
- 低温环境温度时流动性好
- 卓越的抗腐蚀和耐磨损性能
- 超强的抗乳化作用
- 强大的抗起泡能力
- 可溶解油垢，具自动清洁能力。

Sullair Vacuum Pump Fluid - SRF 1/4000

- High oxidative stability contributes to SRF 1/4000
- High viscosity index for speed stability
- High temperature stability
- Low temperature fluidity for cold ambient startups
- Excellent anti-wear properties and corrosion protection
- Excellent demulsibility
- Good resistance to foaming
- Improved cleanliness.

寿力真空系统：全套解决方案

SULLAIR VACUUM SYSTEMS: THE COMPLETE PACKAGE.



高效率的油/气分离器

卡盒式更换部件。

减少润滑油流失。

降低润滑油更换成本。

减低工时费用及停机时间。

50马力至200马力采用两级分离。

Highly efficient air/fluid separation

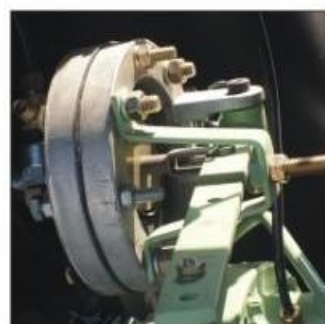
Replaceable cartridge-type element.

Reduces fluid carry-over.

Lowers make-up fluid cost.

Reduces labor costs and downtime.

Two-stage separation on 50hp to 200hp.



真空调节装置

输出与需求相匹配。

系统真空平稳。

免装储气桶。

减低关停机所引起的冲击和磨损。

Sullair variable capacity control can:

Match output with demand exactly.

Offer stable output.

Free of air storage drum.

Reduce abrasion caused by on/off.



金属软管

隔绝振动。

接头密封圈密封避免振动。

Metal hose

Vibration control.

Avoid vibration by seals.

冷却方式

水冷却或气冷却机型。

依照环境条件选择最佳的冷却方式，

风冷机型无需冷却水系统，节省水资源。

Cooling alternatives

Air or water-cooled models.

Choose most cost effective method for your

environment. Eliminates need for costly seal

water treatment and disposal.



连接管路和密封

主要油路采用Parker软管。

油管接口采用“O”形密封，避免漏油。

Pipes and connectors

The main pipes are Parker hose.

The connectors are connected by O-ring seals

to avoid leakage.



马达与真空泵主机采用弹性联轴器直联

与皮带传动相比较节省能耗超过5%。

减少V型皮带连接带来的维修费用。

提供精确的轴心定位。

延长主机（泵）轴承及马达寿命。

Motor and vacuum pump air end are directly connected via flexible coupling

5% energy savings over belt drive.

Eliminates maintenance expense associated with V-belts.

Provides accurate shaft alignment.

Optimizes bearing life of air end (pump) and motor.





软启动器

减少了机械冲击，降低了对电网的需求，提高了真空泵的寿命。电机从零电压开始软启动，避免了星三角启动转矩不足的问题。对电机、压缩机、电网的冲击大大减少。

Soft starter

Reduces mechanical impact and demand for power grid and improves service life of the vacuum pump. The motor experiences soft starting from 0 Voltage and avoids insufficient torque for Y-delta starting. The impact on motor, compressor and power grid is greatly reduced.

EH&S措施

专门设计的环境保护盘，确保在维护时产生的液体泄露被完全回收。

EH&S

Specialty designed environmental protection pan assures that fluid is fully contained should any drips occur while servicing.



高效电机:

1. IP55全封闭式电机。
2. 美国NEMA能效标准高效电机。
3. 超高启动转矩设计。
4. 低噪音设计，空载噪音LPA<75dB(A)。
5. 绝缘等级：F（B级考核）。

High efficiency motor

1. IP55 fully enclosed motor.
2. Conform to US NEMA standards for high efficiency.
3. Ultra high starting torque design.
4. Low noise design. LPA <75dB (A).
5. Insulation class: F (Grade B test).

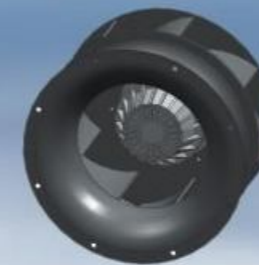


冷却风扇

质量轻、平衡好、噪音低的外转子电机离心风扇。

Cooling Fan

Light, well balanced and low noise centrifugal fan with outer rotor motor.



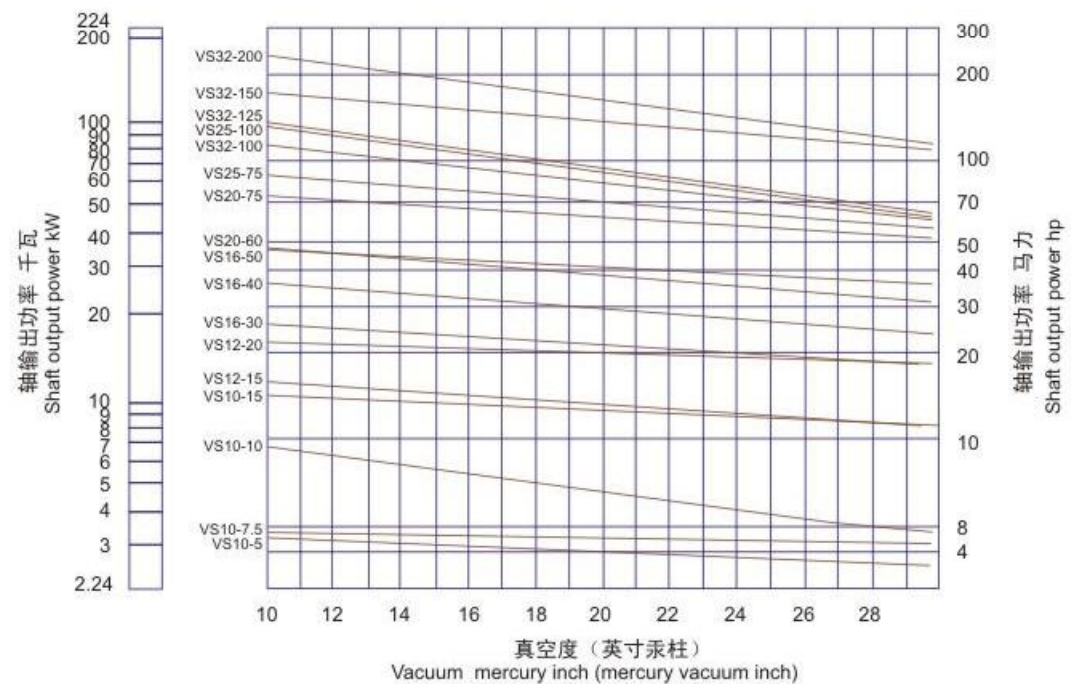
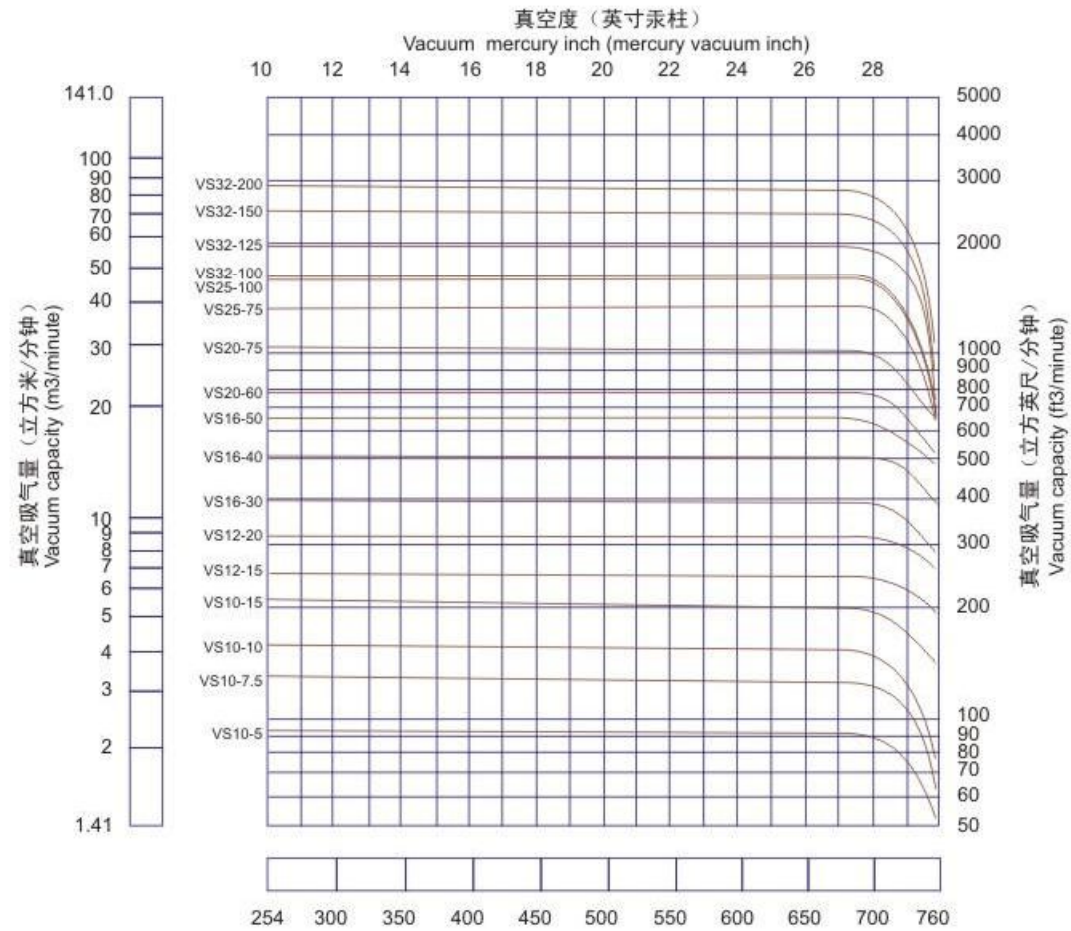
专业的减震、降噪设计，使机组额定工况运行时的噪音低至72分贝。

Unique anti-vibration and insulation design results in a noise level lower than 72 dB (A) when the machine is running under the rated condition.



9

性能
PERFORMANCE



规格
SPECIFICATION

	VS-10系列 VS-10 series				VS-12系列 VS-12 series	
	10-5	10-7.5	10-10	10-15	12-15	12-20
60/50赫兹 60/50Hz	5	7.5	10	15	15	20
马达 (马力) Motor (hp)	4	5.5	7.5	11	11	15
马达 (千瓦) Motor (kW)	2.21	3.4	4.11	5.52	6.94	8.78
吸气量 Capacity(m ³ /m)	29.9	29.9	29.9	29.9	29.9	29.9
极限真空度 Max.Vacuum (in.HgV)	29.9					
尺寸和重量 Dimensions and weights with enclosure						
长 (英寸/毫米) Length (in/mm)	42/1067	42/1067	42/1067	42/1067	66/1676	66/1676
宽 (英寸/毫米) Width (in/mm)	29/737	29/737	29/737	29/737	36/914	36/914
高 (英寸/毫米) Height (in/mm)	50/1270	50/1270	50/1270	50/1270	43/1092	43/1092
重量 磅/公斤 Weight (lb/kg)	684/310	684/310	701/318	701/318	1480/671	1480/671
进口尺寸 (英寸/inch)	2 1/2	2 1/2	2 1/2	2 1/2	2 1/2	2 1/2
出口尺寸 (英寸/inch)	3	3	3	3	3	3

	VS-16系列 VS-16 series			VS-20系列 VS-20 series	
	16-30	16-40	16-50	20-60	20-75
60/50赫兹 60/50Hz	30	40	50	60	75
马达 (马力) Motor (hp)	22	30	37	45	55
马达 (千瓦) Motor (kW)	12.18	15.29	17.84	22.94	29.31
吸气量 Capacity(m ³ /m)	29.9	29.9	29.9	29.9	29.9
极限真空度 Max.Vacuum (in.HgV)	29.9				
尺寸和重量 Dimensions and weights with enclosure					
长 (英寸/毫米) Length (in/mm)	72/1829	72/1829	72/1829	84/2134	84/2134
宽 (英寸/毫米) Width (in/mm)	48/1219	48/1219	48/1219	48/1219	48/1219
高 (英寸/毫米) Height (in/mm)	62/1575	62/1575	62/1575	64/1626	64/1626
重量 磅/公斤 Weight (lb/kg)	2660/1206	2660/1206	2810/1274	3820/1732	3820/1732
进口尺寸 (英寸/inch)	4	4	4	5	5
出口尺寸 (英寸/inch)	3	3	5	5	5

	VS-25系列 VS-25 series			VS-32系列 VS-32 series		
	25-75	25-100	32-100**	32-125	32-150	32-200*
60/50赫兹 60/50Hz	75	100	100	125	150	200
马达 (马力) Motor (hp)	55	75	75	80	110	150
马达 (千瓦) Motor (kW)	38.1	51.8	51.8	58.93	79.8	107.4
吸气量 Capacity(m ³ /m)	29.9	29.9	29.9	29.9	29.9	29.9
极限真空度 Max.Vacuum (in.HgV)	29.9					
尺寸和重量 Dimensions and weights with enclosure						
长 (英寸/毫米) Length (in/mm)	110/2794	110/2794	110/2794	110/2794	110/2794	151/3838
宽 (英寸/毫米) Width (in/mm)	72/1829	72/1829	72/1829	72/1829	72/1829	72/1829
高 (英寸/毫米) Height (in/mm)	81/2058	81/2058	81/2058	88/2238	98/2493	98/2493
重量 磅/公斤 Weight (lb/kg)	7000/3197	7000/3197	7000/3197	9400/4269	11000/4990	13000/5900
进口尺寸 (法兰/Flange)	6	6	6	6	6	8
出口尺寸 (法兰/Flange)	8	8	8	8	8	8

*只用60赫兹 *Only use 60Hz

**只用50赫兹 **Only use 50Hz