

提供压缩空气系统是我们的核心事业 Air Solutions Are Our Core Business

为实现用户最低的采购成本，寿力提供一整套空气系统，该系统具有更低的运行费用，高可靠性和最大的投资回报。
For the lowest total cost of ownership, Sullair provides an air system designed to lower operating cost, improve reliability and maximize return on investment.



通过分析，管理和控制用户所有的压缩空气设备，寿力为客户提供压缩空气系统以帮助用户降低运行成本，提高生产效率。为了满足您对压缩空气系统的特殊要求，请联系寿力当地代理商寻求更多的帮助。获取当地代理商联系方式，请浏览以下网站或打电话。
Sullair offer air systems to help compressed air users reduce their energy costs and improve their productivity by analyzing, managing and controlling total compressed air systems. Information on the compressed air system tailored to your specific needs can be obtained by contacting your local Sullair Distributor. To acquire local distributor contact information, see the below.



美国寿力

中山市顺力机电设备有限公司

TEL: 0760-88639018 FAX: 0760-88639013

[Http://www.zs88613178.com](http://www.zs88613178.com)

24 小时紧急服务专线: 139 2817 0110

地址: 中山市石岐区安山大街西 12 巷 6 号

寿力螺杆式空气压缩机 Sullair Rotary Screw Air Compressors AS0400-7500 ■ 4-75kW / 5-100HP



唯一专注于螺杆技术的空气压缩机制造厂家

The only air compressor manufacturer to concentrate exclusively on rotary screw technology

自1965年以来，寿力公司一直引领空压机技术领域的创新。我们凭籍40多年的经验，对这一领域进行了新一轮的革新。寿力公司采用最先进的技术、设备和生产工艺为客户提供最优良的空气压缩机产品，满足客户最严格的要求。寿力产品以其实用设计，突出的技术和卓越的质量闻名于世。

Since its founding in 1965, Sullair has been recognized around the world as an innovator in rotary screw compression technology. With more than 40 - year expertise , Sullair is leading innovation in this field. Utilizing the most modern technologies, equipment and advanced manufacturing techniques, Sullair designs, manufactures, assembles, and tests the most innovative compressed air and vacuum products in the industry. Sullair products are known around the world for their universally applicable design, outstanding craftsmanship and supeior quality.

寿力专业人员通过优化设计，在确保寿力产品令人称奇的可靠性、稳定性及相关性能参数的前提下，为您提供结构简单，操作简便，性能卓越的AS系列5 - 100HP空压机。事实上，它的设计在各个方面为该行业制定了新的标准。

AS series(5 - 100HP) compressor , which are environmental, reliable, quiet ,with excellent performance and easy to be maintained, has been provided by sullair. These machines have redefined industry standards for continuous duty compressors in the 5-100 horsepower range.

与寿力在一起，您购买的是完善的客户服务

With Sullair, You Are Buying Customer Service

“客户满意”是寿力公司的理念的基石。我们的服务包括：

- *设备维护
- *客户培训
- *正品零件供应

At Sullair, Total Customer Satisfaction is a comestone of our corporate philosophy. We offer everything from technical problem-solving to training customer personnel in the proper operation and maintenance of Sullair machines. Our after-market support also includes worldwide availability of genuine Sullair service parts, as well as fast, dependable product delivery.



ISO 9001:2008 and ISO 14001:2004 certified



本企业通过 ISO9001 - 2008 国际质量管理体系认证



Achieving Competitive Excellence



寿力AS0400-7500系列空气压缩机

Sullair AS 0400-7500 series compressor



图: AS0400-7500系列空气压缩机
图: AS0400-7500 series air compressor

弹性联轴器

- 不用移动马达就可以快速简便更换弹性体。
- 便于对轴封进行维护。
- 可径向拆装。

Falk flexible couple

- Change the flexible parts easily without of moving the motor.
- For easy maintenance of shaft seal.
- Install or remove the element radially.



图: AS0400-7500系列空气压缩机
图: AS0400-7500 series air compressor

疏水阀

- 铝制外壳，经久耐用。
- 自动排水，节能效率高。

Water separator

- Aluminium shell improves reliability.
- Drained automatically, high efficiency and energy saving.

寿力专用润滑油

- 高粘度指数，润滑效率高，润滑效果好。
- 高氧化稳定性，更长的使用寿命。
- 与系统的适应性好，更低的运行成本。
- 高温稳定，适用范围广。
- 低凝点保证良好的低温适应性。

Sullair Special Lubricants

- High viscosity index means lubricating well and high efficiency.
- High oxidative stability with longer life.
- Good compatibility with air system, lower cost.
- High temperature stability, used widely.
- Low solidifying point with good performance.



原装螺杆主机

- 进气阀与机头集成在一起，低转速，长效，节能。
- 配对加工的转子，具有极高的压缩效率。
- 转子槽线和节线设计，减少了内部泄漏。
- 轴承润滑油储存槽保证了空压机优异的启动及加载性能。

Air End

- Air end which embedded in by inlet valve is with low speed and high efficiency.
- The screw is manufactured by matching with excellent efficiency.
- The pitch curves design reduces leakage.
- BFR (Bearing Fluid Reservoirs) ensures fluid is available at startup and on load.

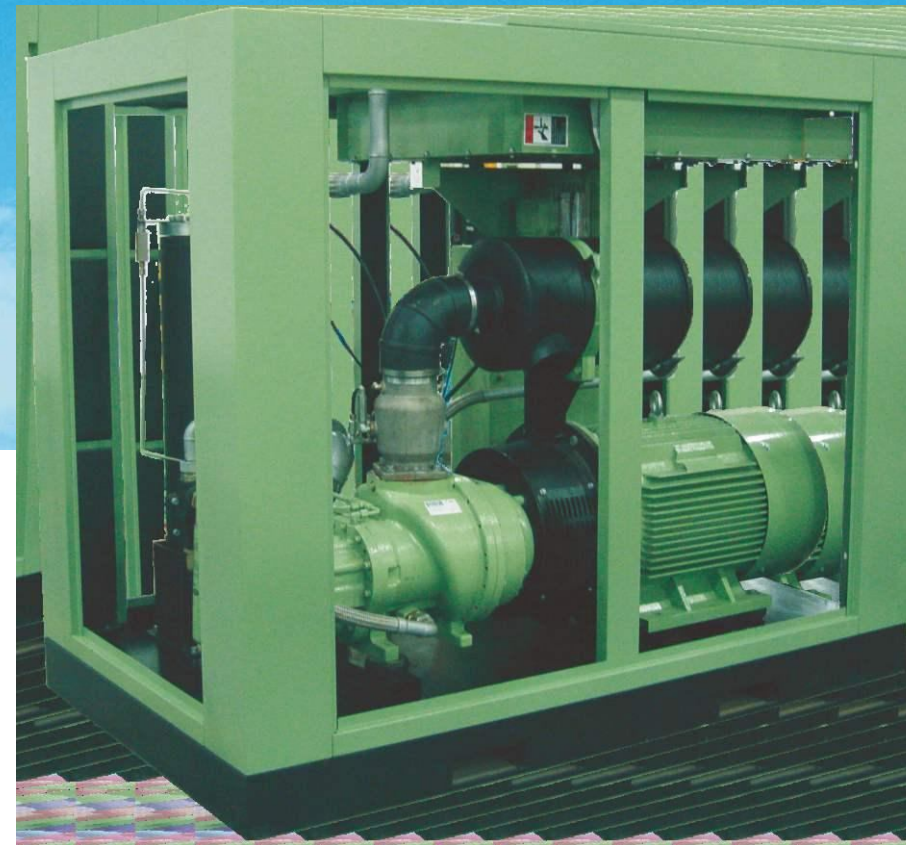


电气柜

- 优质电气元器件。
- 采用银触点，寿命可达300万次以上。

Electrical Equipment

- Excellent electrical parts.
- Silver touch point, longer life.



外观

- 简洁美观
- 橡胶减振垫

Appearance

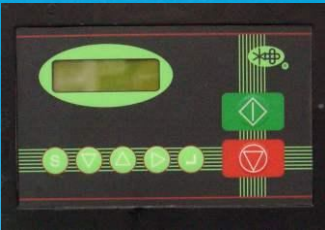
- Simple and good look
- Anti-shock rubber pads



寿力AS0400-7500系列空气压缩机
Sullair AS 0400-7500 series compressor

微电脑控制器

- 具有温度、压力等参数实时显示及报警功能。
- 提供两个RS485接口，采用Modbus通讯协议。
- 提供USB接口，实现多种语言程序安装和升级。
- 无需添加设备即可实现联机群控。
- 预留3路外设开关量输入信号，方便监控。
- 提供2路模拟量输入接口，方便用户采集。



Micro Comprocessor Controller

- Temperature, pressure and so on can be displayed and warned all at times.
- Dual Rs485 ports with standard Mod-bus communication protocol.
- USB port for program installed and updated.
- No need to have more lead-lag & sequenced multiple compressors.
- Extra 3 input switches for accessory equipment.
- Dual analog ports to show the actual data.

环境保护

- 完全密封的环境保护盘，确保在维护时产生的液体泄露被完全收集。

Environmental Protection

- A fully-sealed environmental protection pan assures that fluid is contained should any drips and occur while servicing.



油气分离系统

- 大容积油气分离罐设计。
- 多级油气分离系统，过滤效率高。
- 低压降，减少至少1%的功耗。

Oil-air separator

- Big tank for Oil-air separation.
- More classes separation to good separation result.
- The pressure decreased lowly and saving almost 1% power.



寿力AS0400-1500系列空气压缩机性能参数
AS 0400-1500 Rotary Screw Air compressor Specifications

Table with 6 columns: Model, Motor HP, Capacity (m³/min) at 8.0bar, 10.0bar, 13.0bar, Weight (kg), and Discharge connection. Rows include models 0400, 0500, 0700, 1100, and 1500.

寿力AS1800-7500系列空气压缩机性能参数
AS 1800-7500 Rotary Screw Air compressor Specifications

Table with 8 columns: Model, Motor HP, Capacity (m³/min) at 7.0bar, 8.0bar, 10.0bar, 12.0bar, Weight (kg), and Discharge connection. Rows include models 1800, 2200, 3000, 3700, 4500, 5500, and 7500.

设备尺寸
Dimensions

Table with 4 columns: Model, Length (mm), Width (mm), and Height (mm). Rows list dimensions for various model ranges.

- 注：
1、排气量是在额定排气压力下测得，电机国标GB3829-4等同于ISO1217（附录C）。
2、AS0400-7500系列空压机为水冷机型。
3、以上均为50Hz机型。